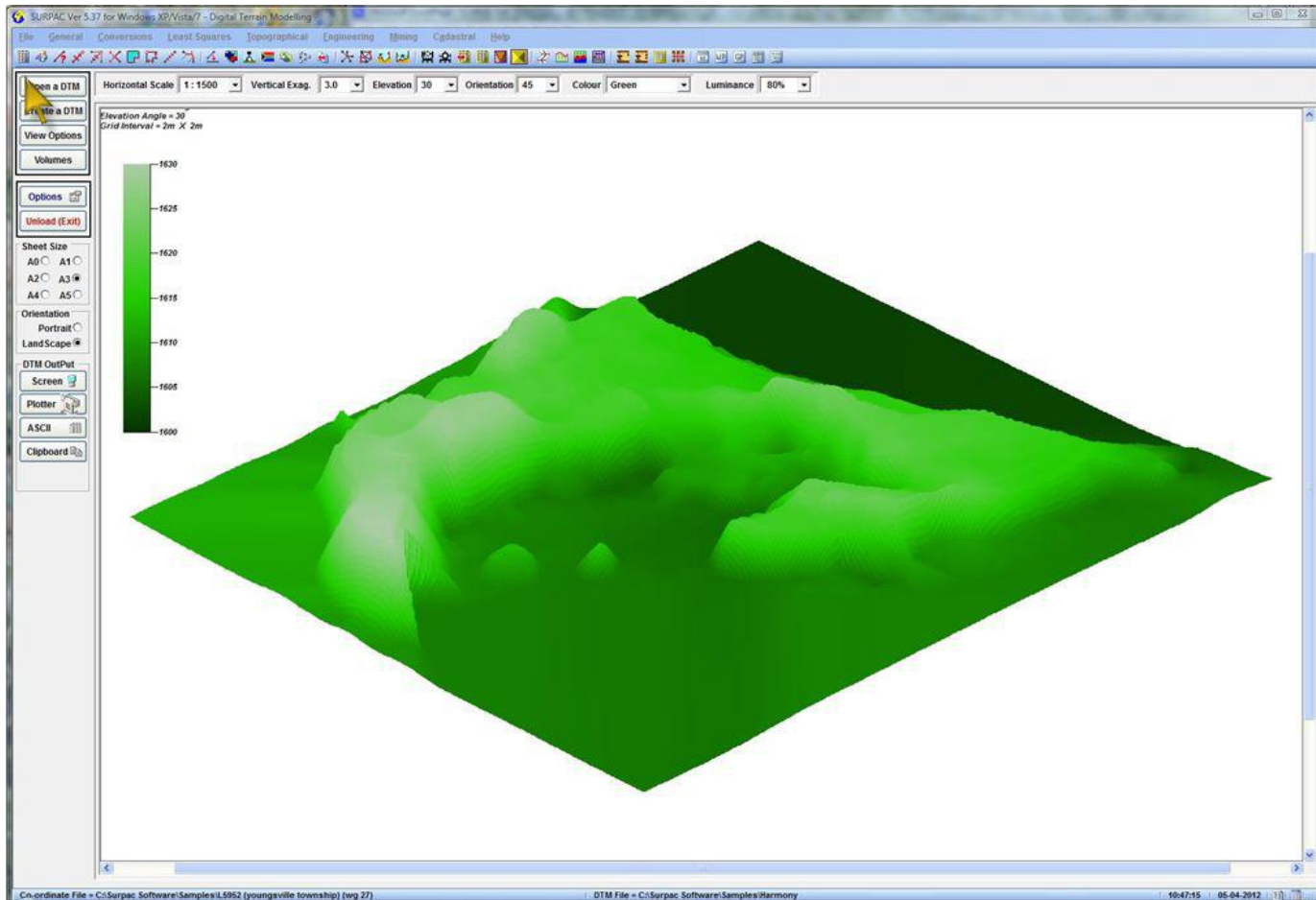


**A DTM display using Solid Modelling and showing both surface and Base DTMs**



A DTM monochrome display showing multiple dump sites



## **Digital Terrain Modelling**

- This application has the following functions :-
  - Creating a Surface DTM and/or a Base DTM, using either :-
    - Contour Triangulation, or
    - Point data plus BreakLine data.
  - Displaying/Plotting a DTM using various options, such as :-
    - Showing either the Surface or the Base DTM,
    - Showing the DTM as either a solid model, or as a "wire frame" model,
    - Using any Viewing Direction or Tilt Angle,
    - Using various colour options for the display,
    - Setting a defined "water line" height and showing the model above and below this line in different colour variations,
    - Dynamic rotation and tilting of the DTM display using the keyboard arrow keys (requires a fast PC!)
  - Calculating Volumes with the following options :-

- Determine the Cut and Fill Volumes between the Surface and Base models,
- Determine the Cut and Fill Volumes between the Surface model and a defined horizontal plane,
- Determine the Cut and Fill Balance Plane height for a Surface model,
- Determine the Cut and Fill Volumes between the Surface model and another, User defined, Surface model.
- General DTM application options include :-
  - Super-imposing a User defined Surface model onto the current Surface model,
  - Calculating the DTM slope Surface Area,
  - Calculating the Surface Area for a horizontal plane intersecting the Surface model,
  - Define and use a sub-area of a Surface model,
  - Display a Slope Analysis model of the current Surface model (showing slope vectors).
- DTM grid data, including BreakLine information, may be stored in an ASCII format for export to other applications.