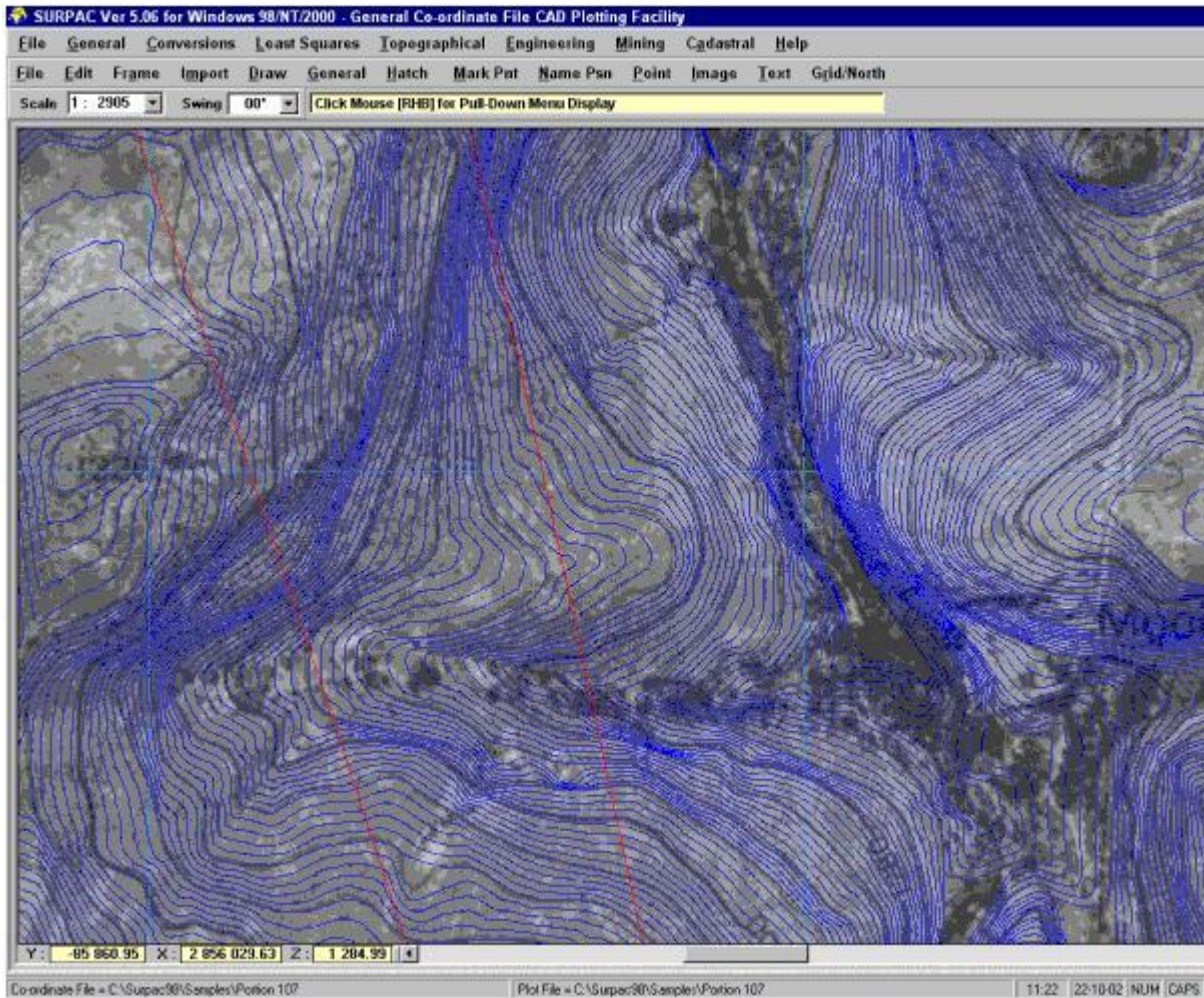


The GENERAL CAD Construction/Editing Programme showing imported DXF data and Task Bars



The GENERAL CAD Programme showing Contours overlaying a background Ortho-photo image



General CAD Construction/Editing

- Plot all, or selected Points from the current Co-ordinate File
- Display and Name Points using a variety of built-in symbols, Sizes and/or Colours
- Construct/Edit Lines using various Line Styles, Thicknesses and/or Colours
- Construct/Edit Arcs and Circles using various Line Styles, Thicknesses and/or Colours
- Write/Edit Text Items using various Fonts, orientations, sizes and Colours
- Display Contours created in the SURPAC Contour CAD programme
- Display Centre Line Data from the SURPAC Horizontal Alignment programme
- Auto Hatch closed polygons using a variety of Hatch Styles
- Import Graphic Images (BMP, JPEG, GIF, ICO, WMF or EMF formats)
- Create Graphic Image of Sheet, or portion of the Sheet (BMP format)
- Display/Plot the Sheet at any Orientation, or Scale
- Auto Display Grid Mesh and/or North Point

- Using simple mouse or keyboard commands, the on-screen view of a CAD Sheet may be :-
 - Zoomed Up,
 - Zoomed Down,
 - Zoomed to a defined window,
 - Zoomed to the defined Plotting scale,
 - Zoomed to a User defined scale,
 - Rotated positively or negatively,
 - Panning or scrolling the display
- Use various drawing Construction/Edit functions such as :-
 - Line Bisect
 - Line Dimension
 - Line Generate (using Polar Data)
 - Line Intersect
 - Line Logical draw
 - Line Replicate
 - Line Sketch
 - Line Trim/Snap
 - Line Subdivide
 - Draw Arrows, Rectangles, Arcs or Circles
 - Auto Display Line Direction and/or Distance
 - Calculate Areas by auto Line location
 - Calculate Areas by Point definition
- Use various Text Writing/Editing functions, such as :-
 - Write a Text Item at any Font, Direction, Size, WTH ratio or Colour
 - Dynamic Copy Text Items
 - Dynamic Move Text Items
 - Dynamic Re-Size and Re-Orient Text Items
 - Edit or Delete existing Text Items
 - Import Text Items from an ASCII File
- Use various Graphic Editing functions, such as :-
 - Import Graphic Images (BMP, JPEG, GIF, ICO, WMF or EMF formats)
 - Create Graphic Image of Sheet, or portion of the Sheet (BMP format)
 - Flip an Image (Horizontal, Vertical or both)
 - Set Images to be in front of, or behind, drawing information
 - Move an Image
 - Re-Size an Image
 - Shift an Image
 - Transform an Image (to fit current System position and size)
 - Use a Transformed Image to Digitize Points and Lines

- **Adjust Image Brightness and/or Contrast**
- **Use the SURPAC "Frame" function to :-**
 - **Copy defined a block of Data from Position to Position, or Sheet to Sheet**
 - **Move a defined block of Data from Position to Position**
 - **Delete a defined block of Line/Text data**
 - **Align a defined block of Text Items (Left/ Centre/ Right Justify, plus horizontal spacing)**
 - **Rotate a defined block of Data**
 - **Zoom Up, or Zoom Down, a defined block of Data**
 - **Store and recall Data Blocks from disk for repeated Sheet application**
- **Import Line, Arc, Circle, Hatch and Text data from DXF Files**
- **Import Line, Arc, Circle, Hatch and Text data from other SURPAC CAD Files**
- **Import Line, Arc, Circle, Hatch and Text data from TopoCAD CAD/GIS Files**
- **Import Spline Contours and Contour Labelling**
- **Print Sheet to A0 - A4 Printer (Inkjet or Pen)**
- **Create a DXF file of Sheet data**
- **Create an HPGL file of Sheet data.**